

The New
PERDANA
Like the looks • Love the drive



PROTON
It's in the Drive!™



PERDANA

A photograph of a cable-stayed bridge with a large sun flare in the background. The bridge's structure is composed of numerous thick, metallic cables that fan out from a central point. The sun is positioned behind the bridge, creating a bright, hazy glow that fills the sky and casts long, soft shadows. In the foreground, a metal railing is visible, and the bridge deck is partially seen. The background shows a body of water and some distant buildings under a clear sky.

Prestige with Presence

The new Perdana by PROTON. A seamless integration of dynamic design and elegance. Pure pleasure to behold, pure exhilaration to drive. Sophisticated yet sporty, the Perdana's distinctive styling imparts an unmistakable presence.

Design that Thrills

The Perdana exudes aerodynamic flair in its sleek lines and fluid curves. Front and rear wraparound lamps are contoured to complement the elegant body.

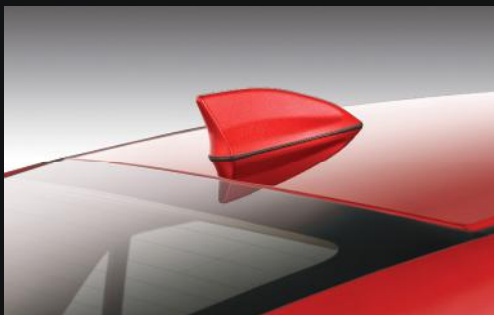
The bold new look achieves particular expression in the latest update of its signature design feature. The distinctive Proton Wings, with chrome embellishments around the bumper fog lamps, convey both class and exclusivity, and complete the look of simple elegance.





Headlamps + DRL

HID* projector headlamps for more accurate light dispersal and sharper focus; automatically adjusts for constant level elevation*. Automatic LED daytime running lights.



Shark-fin Antenna

A stylish yet functional antenna and GPS receiver.



LED Rear Combi Lamps

High-tech crystal light with instantaneous LED, safety glass and unique graphic configuration.



Distinctive Front Grille

Elegantly understated front grille showcases the signature look of the Proton Wings.



Alloy Rims

Sculptured 17" alloy rims with dual tone* finishing for a more exclusive and lightweight look.



Bodykit with Spoiler*

Front and rear skirting, plus low-swept spoiler accentuate a sleek, sporty design.

*Only available in the 2.4L variant



Leather Seats*

Multi-contoured leather seating for a touch of opulence.

Inner Beauty, Inner Space

The eye-catching exterior is matched by a sumptuous interior, creating a perfect balance of form and function, craftsmanship and art.

The cabin redefines interior vehicle space. Multi-contoured leather seats conform to your utmost comfort. Matching upholstery accented with fine wood grain trim and black moulding creates a cocoon-like cosiness and warmth, yet one that also boasts generous legroom and headroom.

Spacious, stylish and designed to afford a quiet ride.



Front Seat Armrest

Sliding adjustable armrest with console compartment for driving comfort.



Rear Seat Armrest

Rear centre armrest with cup holder and trunk access.



Side Step

Exclusively designed for the new Perdana. Practicality with an elegant expression.

**Only available in the 2.4L variant*



Multi-function Steering Wheel

Steering wheel with leather wrap for extra comfort and illuminated for greater visibility.



USB & AUX Jack

For added connectivity and versatility.



Touch Screen Audio System

PROTON Infotainment System with radio, CD, integrated DSP and Bluetooth. Also plays MP3, WMA, CD-R and DVD*.



Touch Screen GPS Navigation*

Advanced GPS navigation system with voice assist, pinch/zoom and slotting for additional map cards.



Dual Zone Automatic Air Conditioning

Dual zone air conditioning with individual climate controls. Rear seat air conditioning with separate vents provides comfort and coolness to rear passengers.



8-Way Power Driver Seat

With lumbar support for comfort and ease. Plus 4-way power passenger seat*.

*Only available in the 2.4L variant

Comfort, Confidence, Control

Drive in comfort, go with confidence, access info and entertainment effortlessly. The new Perdana lets you optimise the driving environment while enhancing your driving experience, to make even long journeys a pleasure.

Advanced GPS Touch Screen Navigation offers sharp images, 3D mapping, and voice activation if desired. A second touch screen interface houses a multimedia PROTON Infotainment System. Enjoy concert-quality six-speaker sound system. Plug in or programme secondary devices for even more connectivity options. Also allows you to listen to music while viewing GPS guidance.



Performance from the Heart

The New Perdana 2.4L variant delivers an impressive 178 horsepower and 222Nm torque, whilst the 2.0L clocks in at a powerful 154 horsepower and 189Nm torque. Both are combined with an efficient 5-speed automatic transmission for response that is smooth yet robust. Offering proven engine technology for high performance, fuel efficiency and lower emissions.

Independent double-wishbone front suspension for improved grip, better stability when braking, and sharper steering response and handling. Independent multi-link rear suspension provides comfort and impressive road handling.



Automatic Transmission with Paddle Shifter*

Electronic throttle control for smooth shifting. Paddle switch provides instant fingertip upshift or downshift on demand.



Multi-function Display

Integrated instrument panel design with clear readouts and unobstructed visual field.

**Only available in the 2.4L variant*





Park Assist

Sensors in front and rear plus rear-mounted camera.



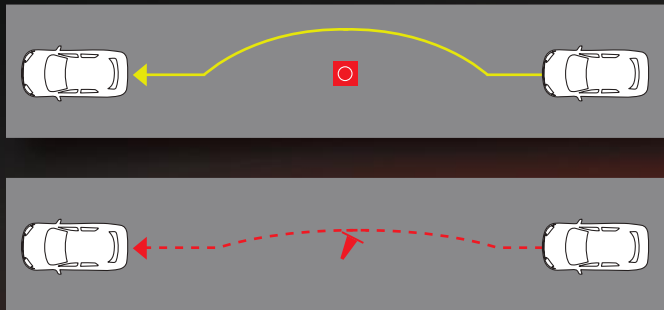
4 Airbags

Standard equipped dual front i-SRS airbags and dual side airbags.



ISOFIX & Top Tether Mount Point

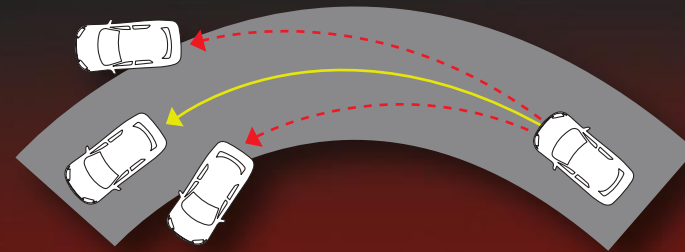
International standard tether anchoring system for child's safety seat.



with ABS without ABS

**Anti-lock Braking System (ABS)
with Electronic Brakeforce Distribution (EBD)**

Prevents wheel lockup and skidding during sudden or hard braking.



with ESC without ESC

Electronic Stability Control (ESC)*

Improves safety by detecting and reducing loss of traction.

*Only available in the 2.4L variant

Peace of Mind

The new Perdana is engineered with you and your family's safety in mind. Its array of driver's aids, advanced braking technology, and active and passive restraints ensure optimal protection for both driver and passengers.

Braking control features include Anti-lock Braking System (ABS), Electronic Brakeforce Distribution (EBD) and Electronic Stability Control (ESC). Park Assist facilitates parking and reversing, with reverse camera and eight sensors in front and rear.



SPECIFICATIONS	2.0L	2.4L
ENGINE		
Engine Type	4 Cylinder, 16 Valve, SOHC	4 Cylinder, 16 Valve, DOHC
Fuel Supply System	PGM-FI (Programmed Fuel Injection)	
Bore & Stroke (mm)	81.0 x 96.9	87.0 x 99.0
Displacement (cc)	1,997	2,354
Compression Ratio	10.6 : 1	10.5 : 1
Maximum Power [kW(hp)@rpm]	115(154)@6,300	133(178)@6,500
Maximum Torque [Nm(kg-m)@rpm]	189(19.3)@4,300	222(22.6)@4,300
TRANSMISSION		
Transmission Type	5-Speed Automatic	
STEERING		
Gear Type	Rack & Pinion Hydraulic Power Steering	
Turning Radius (m)	5.70	
BRAKING		
Front	Ventilated Disc	
Rear	Solid Disc	
SUSPENSION		
Front	Independent Double Wishbone with Coil Spring and Stabiliser	
Rear	Independent Multi-link with Coil Spring and Stabiliser	
DIMENSIONS		
Length (mm)	4,999	5,020
Width (mm)	1,845	1,845
Height (mm)	1,475	1,475
Wheelbase (mm)	2,800	2,800
Kerb Weight (kg)	1,510	1,535
Tyre Size	225/50 R17	225/50 R17
Fuel Tank Capacity (litres)	70	70
Seating Capacity	5	5
EXTERIOR		
Projector Headlamps	√	HID with Auto Leveling
Front and Rear Fog Lamps	√	√
LED Daytime Running Lights (DRL)	Integrated Light Guide with Headlamps	Integrated Light Guide with Headlamps
All LED Rear Combi Lamps	√	√
Shark-fin Antenna	√	√
Full Bodykit with Rear Spoiler	-	√
Alloy Wheels	17" with Mono Tone Finishing	17" with Dual Tone Finishing

SPECIFICATIONS	2.0L	2.4L
----------------	------	------

INTERIOR		
----------	--	--

Interior Colour	Black	Beige & Black
Seats	Fabric & Leather	Leather
Door Trim Insert	Leather	Leather
Steering Wheel	Leather with Audio Switches	Leather with Audio Switches
Tilt & Telescopic Steering Wheel	√	√
Auto Air Conditioning	Dual Zone	Dual Zone
8-Way Power Driver Seat	With Power Lumbar Support	With Power Lumbar Support
4-Way Power Passenger Seat	-	√
Rear Foldable Seat	√	√

FEATURES		
----------	--	--

PROTON Infotainment System	6.2" TFT Screen with Radio, CD, Integrated DSP, Bluetooth, USB & AUX Connectivity	6.2" TFT Screen with Radio, CD, DVD, Integrated DSP, Bluetooth, USB, AUX Connectivity & GPS Navigation
6 Speakers	√	With Subwoofer
Auto Cruise	√	√
Paddle Shifter	-	√
Remote Power Windows	√	√

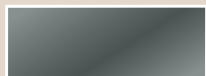
SAFETY		
--------	--	--

Dual Front SRS Airbags	√	√
Dual Side Airbags	√	√
ABS with EBD	√	√
Electronic Stability Control (ESC)	-	√
Front Active Head Rest	√	√
Auto Headlamp	√	√
Seatbelt Pre-tensioner & Load Limiter System	√	√
Front Seatbelts	3-Point ELR (With Dual Pre-tensioner)	3-Point ELR (With Dual Pre-tensioner)
Rear Seatbelts	3-Point ELR x 3	3-Point ELR x 3
Front Parking Sensors	√	√
Rear Parking Sensors	√	√
Anti-trap Power Window	Driver & Front Passenger	Driver & Front Passenger
ISOFIX & Top Tether Mount Point	√	√
Reverse Camera	√	√

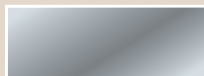
ACCESSORIES		
-------------	--	--

Safety Kit	√
License Plate Holder	√
Tinted Window	√

EXTERIOR COLOUR					
-----------------	--	--	--	--	--



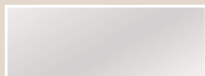
Graphite Grey



Sterling Silver



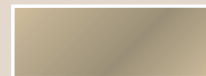
Ruby Red



Cotton White



Midnight Black



Citrine Gold



proton.com

PROTON Holdings Berhad (623177-A)

PROTON Customer Care 1 800 888 398



PROTON

It's in the Drive!™

All information detailed in this brochure is correct at the time of printing. Perusahaan Otomobil Nasional Sdn. Bhd. reserves the right to make changes to the colours, features and/or other specifications detailed in this brochure as well as discontinue any individual model without prior notice. The vehicle may differ slightly from those featured in this brochure. Please consult your PROTON dealer to ensure the vehicle is in accordance with your expectations. 2016 (All rights reserved) Perusahaan Otomobil Nasional Sdn. Bhd.